

# Architecting Cloud with OpenStack

Choe, Cheng-Dae  
[whitekid@gmail.com](mailto:whitekid@gmail.com)

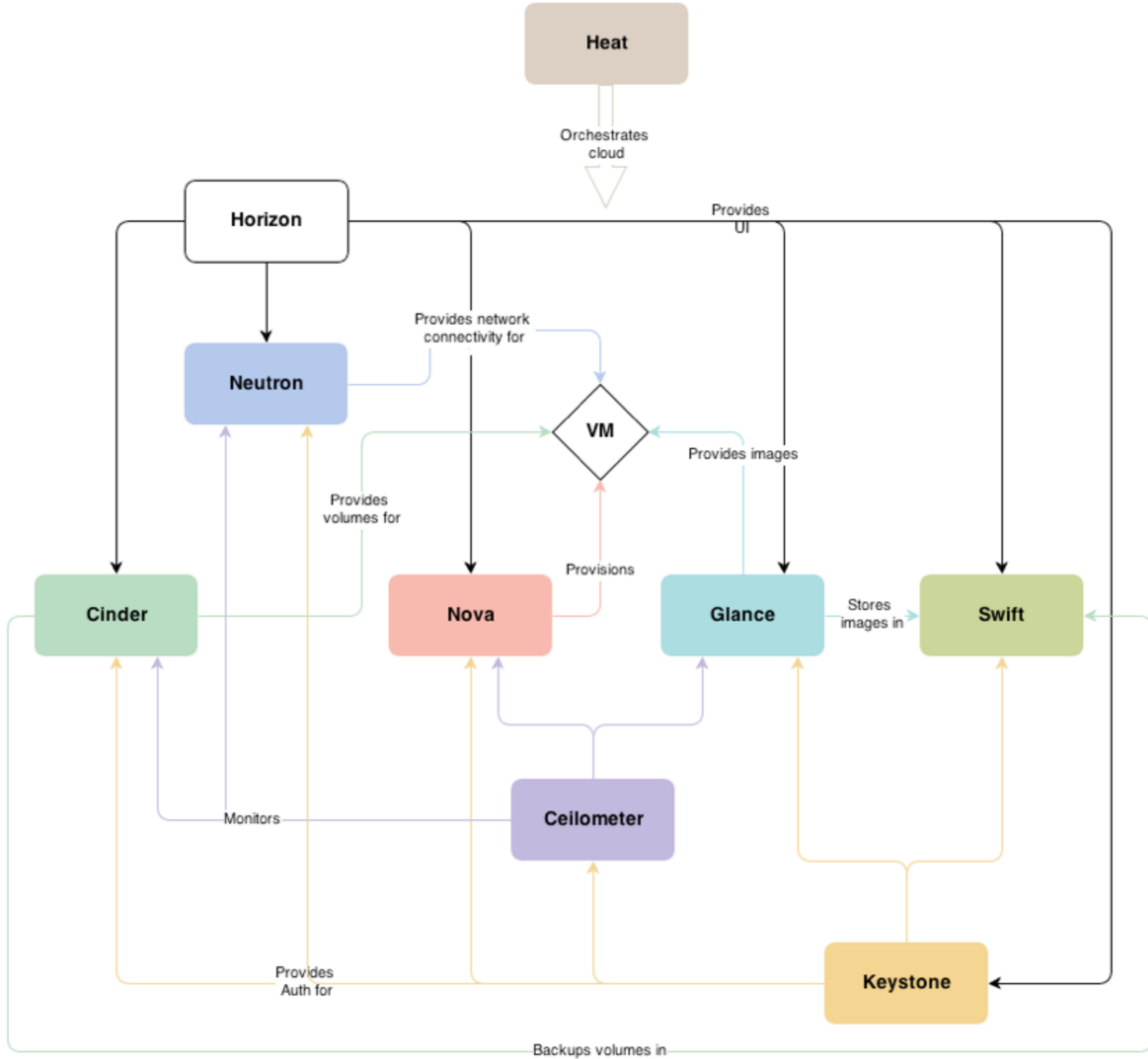
Broad network access

Resource Pooling

Rapid elasticity

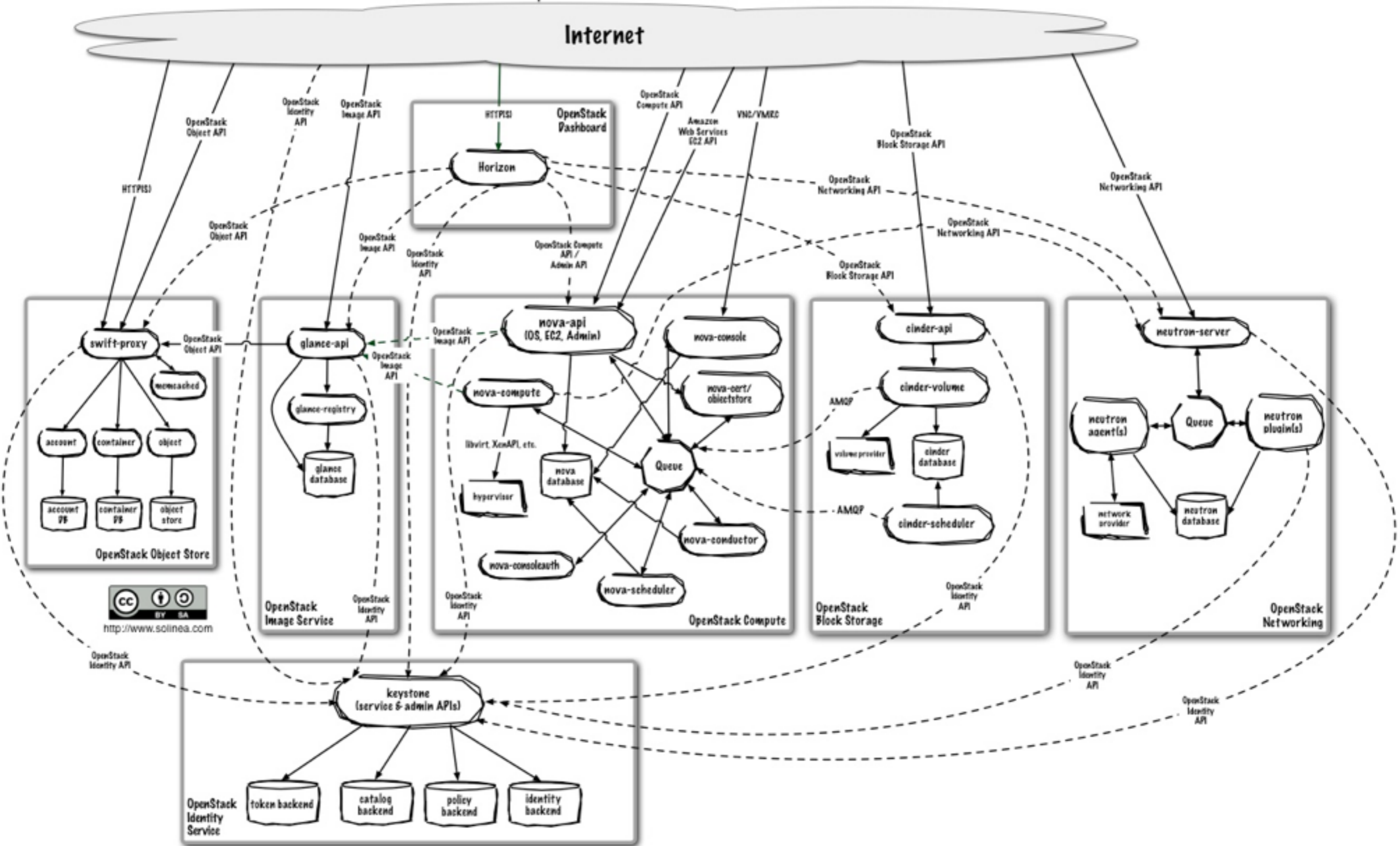
Measured service

computing resource that  
controlled by API.

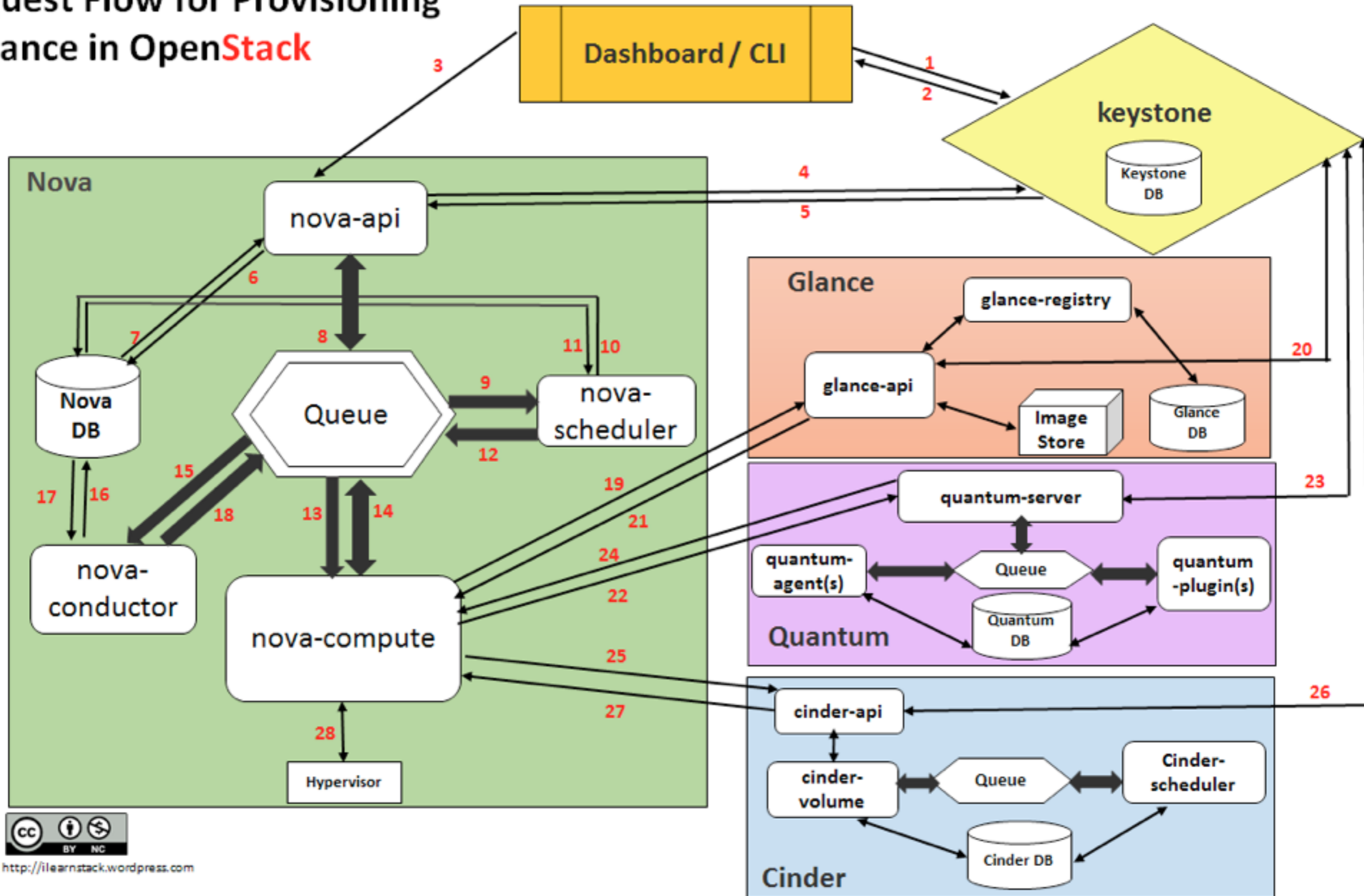


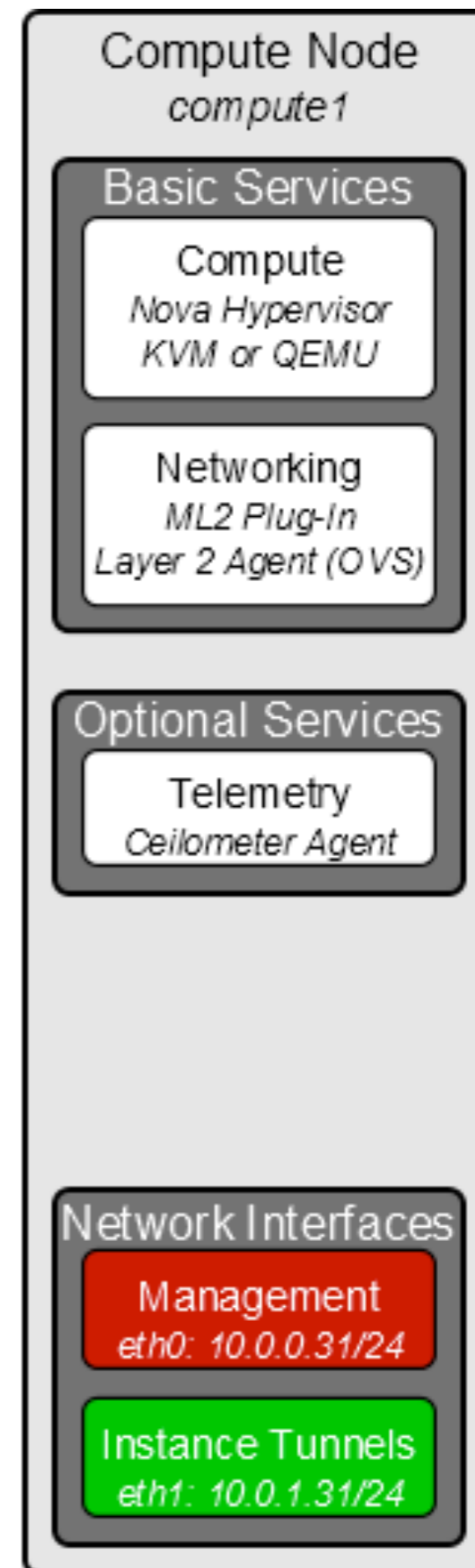
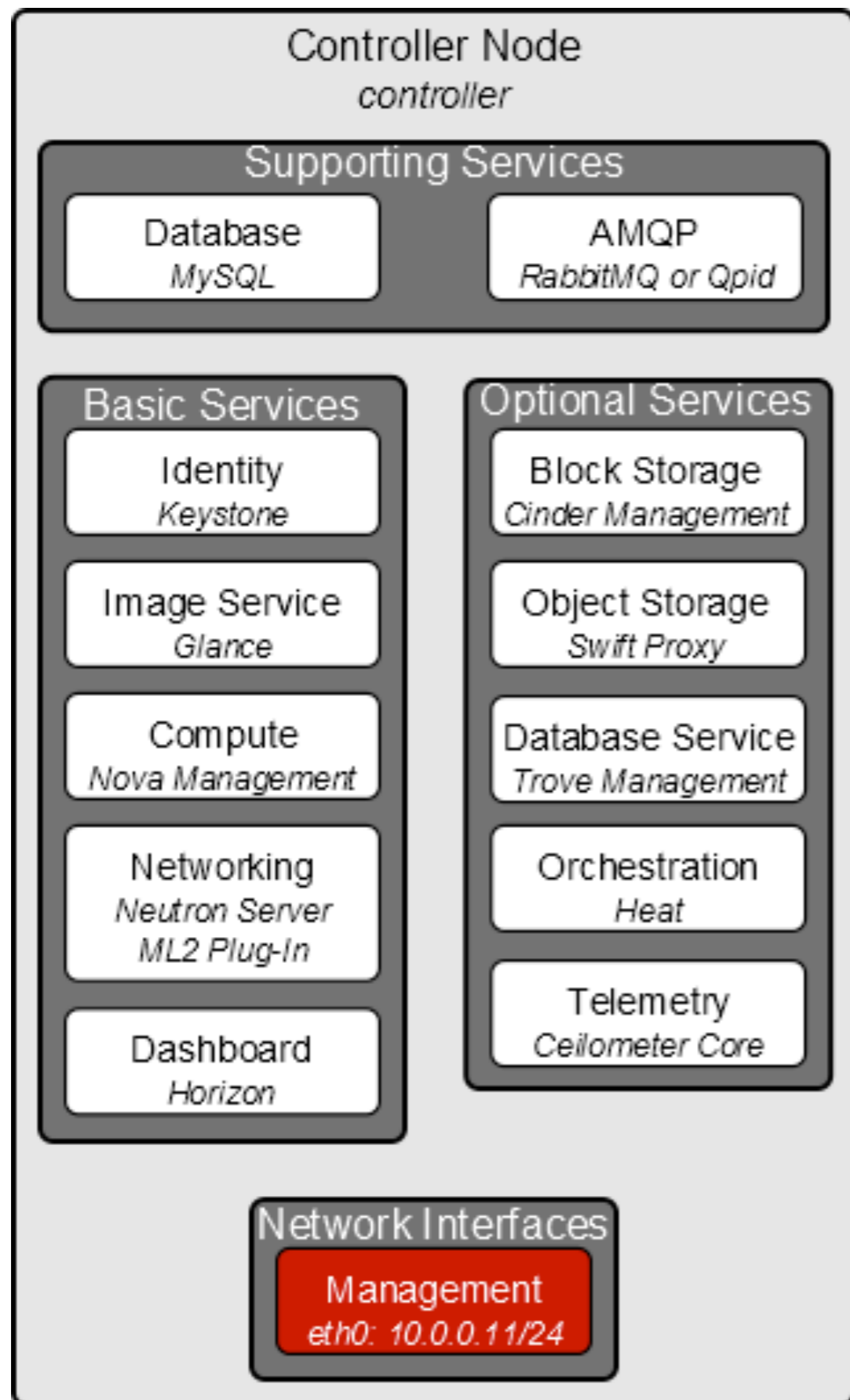


- Command-line interfaces (nova, neutron, swift, and so on)
- Cloud Management Tools (RightScale, Enstratus, and so on.)
- GUI tools (Dashboard, Cyberduck, iPhone client, and so on.)

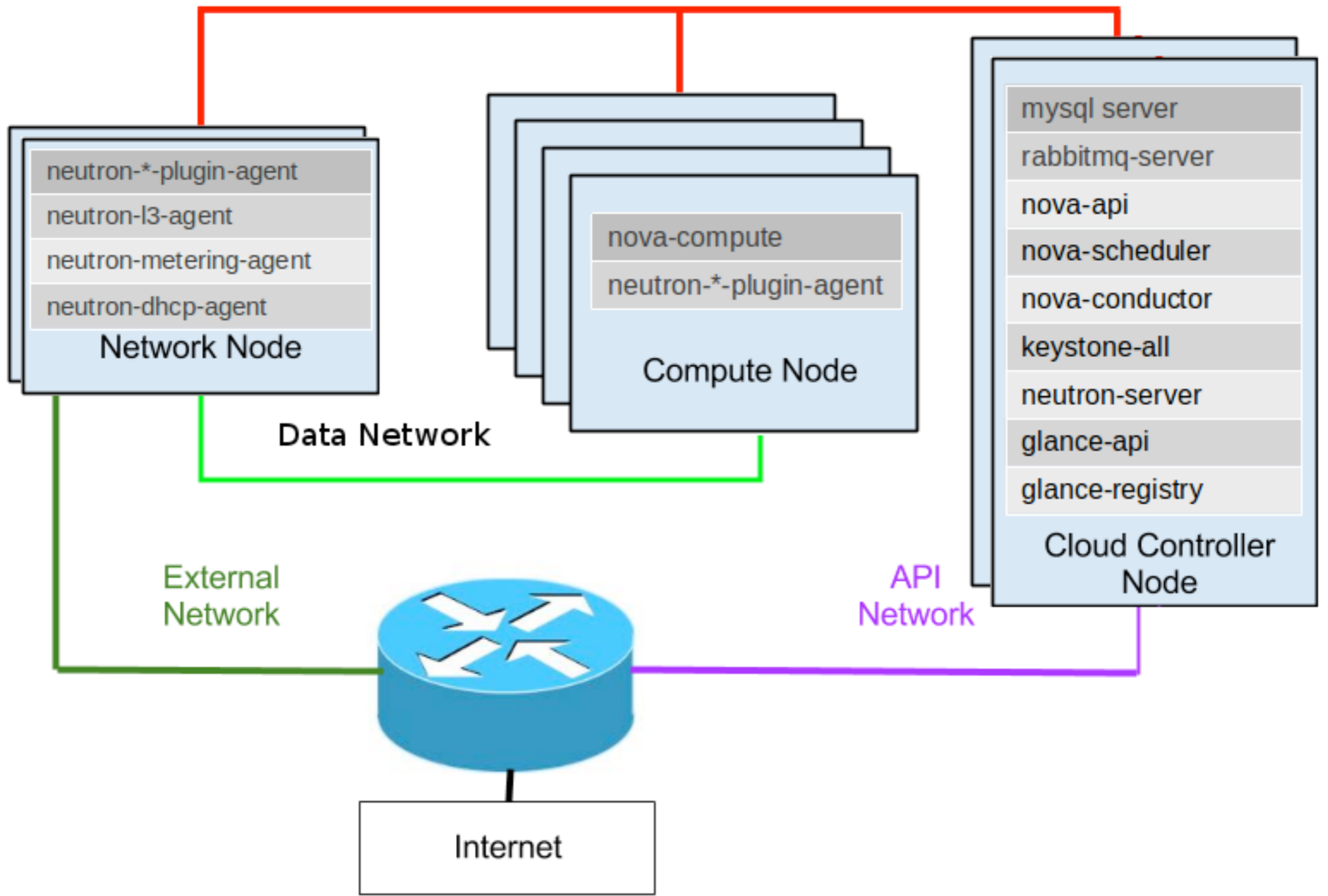


# Request Flow for Provisioning Instance in OpenStack





# Management Network



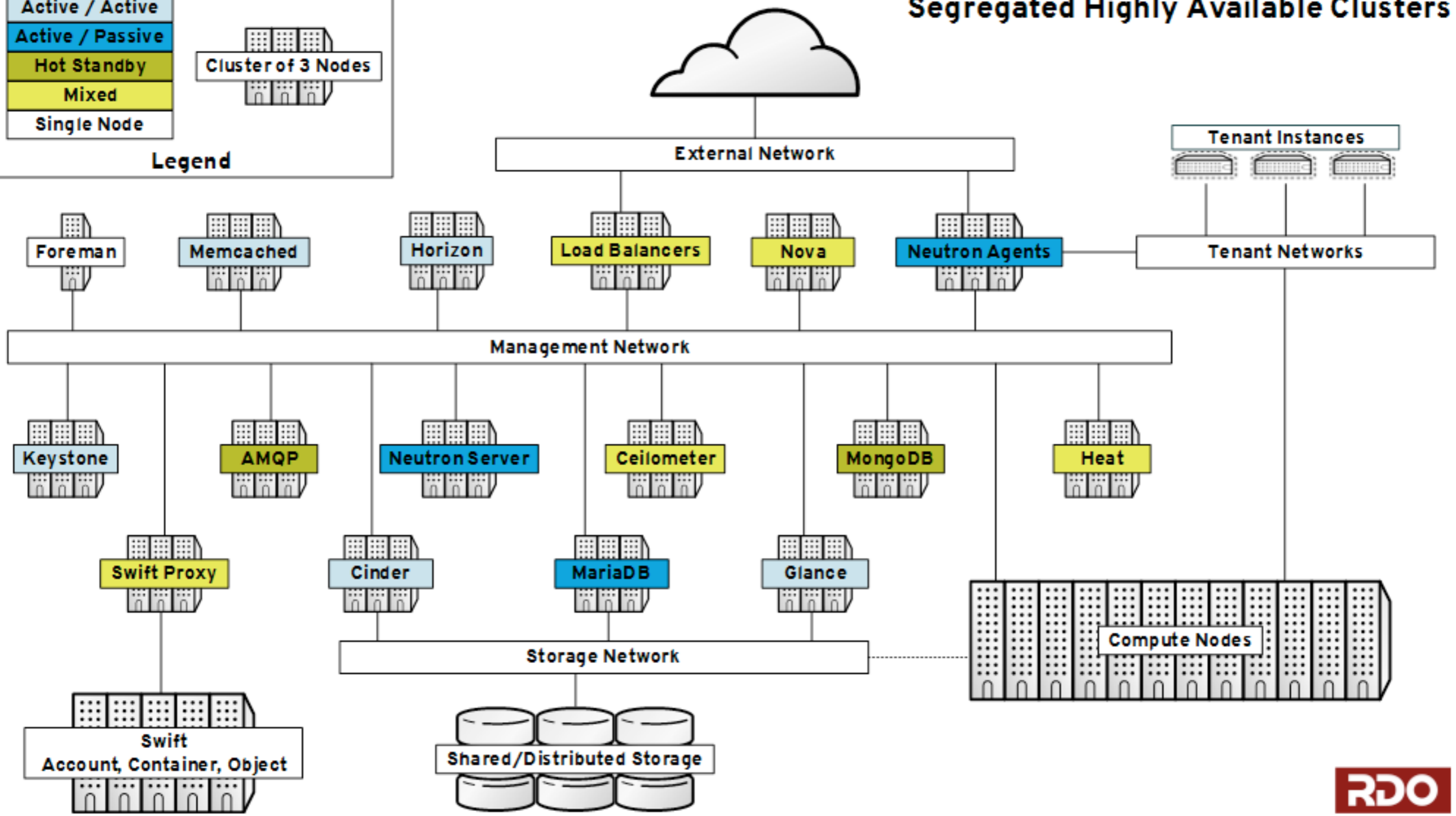


# Segregated Highly Available Clusters

**Legend**

- Active / Active
- Active / Passive
- Hot Standby
- Mixed
- Single Node

Cluster of 3 Nodes



고려 사항

Live Migration

NOT a user feature

It's a management  
features

shared storage

Tenant network  
isolation

# network isolation

- shared network with security group
- private network per tenant

L3 agent HA

- bp/13-high-availability
- bp/neutron-ovs-dvr



gre tunneling

vlan

vxlan (overlay)

...

fabric

private cloud

- shared network

public cloud

- vxlan, ceph

Thanks